

Super Savers

Prices Good: 01/15/12- 02/29/12

Wilco Supply

Wholesale Builders Hardware & Locksmith Supplies

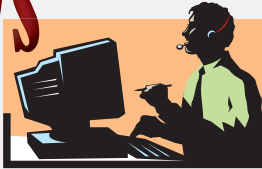
A Family Owned Business

Serving You Since 1951

Phone: 800-745-5450 Fax: 800-876-5397

Website: www.wilcosupply.com

NEWS



Call Your Wilco Salesperson to Place Your Order!

Savings In This Issue from:

- HPC
- Strattec
- Falcon
- CCL
- Schlage
- Pemko
- Lucky Line
- LCN
- Jackson

Order On-Line 24/7 Today!

Key of The Month



22% Savings!

Super Saver Price:

\$10.86 ea.

(Regular: \$13.92 ea.)

STA 5903089

Chevy Mal/Pont G6 Trans GM Logo



50% Savings!

Key Trail Key Tracking Software



Super Saver Price:

\$198.50 ea.

(Regular \$397.00 ea.)

HPC KT CD

Note: Special Purchase, While Supply Lasts!



15% Savings!

Mailbox Locks



Part No.	Description	Reg.	Super Saver ea.
CCL MBL82010	4Pin KD D4291 w/ 5Cams	\$3.35	\$2.85
CCL MBL82011	4Pin KD D4291 w/ Shutter 5Cams	\$4.69	\$3.99



18% Savings!

NEW! NEW! NEW!



Thumb Lite
LED Lithium Battery
25PK Card
LUC 90700

Super Saver Price:

\$35.78

(Regular \$43.63 DP.)



Thumb Lite
LED Lithium Battery
Carded
LUC 90701

Super Saver Price:

\$1.44

(Regular \$1.75 CD.)



Key Identifier
med. 200/Bx Asst Clrs
LUC 16700

Super Saver Price:

\$9.84

(Regular \$12.00 ea.)



Key Tag, Swivel Ring
200/Bx Asst Clrs
LUC 16800

Super Saver Price:

\$31.98

(Regular \$39.00 ea.)



Key Tag, Ring
200/Bx Asst Clrs
LUC 16900

Super Saver Price:

\$23.62

(Regular \$28.80 ea.)



Key Tag, Double Ring
100/Bx Asst Clrs
LUC 60500

Super Saver Price:

\$23.62

(Regular \$28.80 ea.)



Key Tag,
1 1/4" Paper w/ Ring
50/Bx
LUC 28200

Super Saver Price:

\$6.40

(Regular \$7.80 ea.)

All Super Saver Quantities are Limited. Proof of Locksmith License Required for Purchase of Some Items

SCHLAGE

25% Savings!

"BE" Series Keypad Deadbolts



SCH BE 365 PLY

Part No.	Description	Reg.	Super Saver ea.
SCH BE365 CAM 505	Sgl Adj 5PIN "C" Camelot	\$136.20	\$102.15
SCH BE365 CAM 619	Sgl Adj 5PIN "C" Camelot	\$142.80	\$107.10
SCH BE365 PLY 505	Sgl Adj 5PIN "C" Plymouth	\$136.20	\$102.15
SCH BE365 PLY 619	Sgl Adj 5PIN "C" Plymouth	\$142.80	\$107.10

"FE" Series Entry Keypad Locks



SCH FE 595 PLY

Part No.	Description	Reg.	Super Saver ea.
SCH FE595 CAM X ACC 505	Adj 5PIN "C" 19 User	\$159.00	\$119.25
SCH FE595 CAM X ACC 619	Adj 5PIN "C" 19 User	\$166.80	\$125.10
SCH FE595 CAM X GEO 505	Adj 5PIN "C" 19 User	\$150.00	\$112.50
SCH FE595 CAM X GEO 619	Adj 5PIN "C" 19 User	\$157.20	\$117.90
SCH FE595 PLY X ELA 626	Adj 5PIN "C" 19 User	\$165.00	\$123.75
SCH FE595 PLY X FLA 505	Adj 5PIN "C" 19 User	\$157.20	\$117.90
SCH FE595 PLY X FLA 619	Adj 5PIN "C" 19 User	\$165.00	\$123.75
SCH FE595 PLY X PLY 505	Adj 5PIN "C" 19 User	\$148.20	\$111.15

"B500" Series Deadbolts



Part No.	Description	Reg.	Super Saver ea.
Single Cyl, Adj 5/6 PIN			
SCH B560P 605	"C" KA4 605	\$42.00	\$31.50
SCH B560P 609	"C" KA4 609	\$42.00	\$31.50
SCH B560P 612	"C" KA4 612	\$42.00	\$31.50
SCH B560P 613	"C" KA4 613	\$48.00	\$36.00
SCH B560P 619	"C" KA4 619	\$42.00	\$31.50
SCH B560P 625	"C" KA4 625	\$42.00	\$31.50
SCH B560P 626	"C" KA4 626	\$38.40	\$28.80
SCH B560P 643	"C" KA4 643	\$42.00	\$31.50

Double Cyl, Adj 5/6 PIN			
SCH B562P 605	"C" KA4 605	\$55.20	\$41.40
SCH B562P 609	"C" KA4 609	\$55.20	\$41.40
SCH B562P 612	"C" KA4 612	\$55.20	\$41.40
SCH B562P 613	"C" KA4 613	\$61.20	\$45.90
SCH B562P 619	"C" KA4 619	\$55.20	\$41.40
SCH B562P 625	"C" KA4 625	\$55.20	\$41.40
SCH B562P 626	"C" KA4 626	\$51.60	\$38.70
SCH B562P 643	"C" KA4 643	\$55.20	\$41.40

Available Key Section Choice: C, CE, E, EF, F, FG, G, C123, C124, C125, C134, C135, C145, C234, C235, C245, C345

Default Key Section: "C"

LCN CLOSERS 15% Savings!



4000 Series Closers

Part No.	Description
LCN 4040 XP AL	Adj, 1-6 Tri-Pk RW/PA W/TBSRT
LCN 4040 XP DKBRZ	Adj, 1-6 Tri-Pk RW/PA W/TBSRT

Super Saver Price:

\$210.63 ea.

(Regular \$247.80 ea.)

FALCON 8% Savings!



Part No.	Description	Reg.	Super Saver ea.
<i>Entry Lock</i>			
FAL W511PD D 626 2 ³ / ₈	2 ³ / ₈ Dane Lvr Grd 2,6Pin "C" Kwy	\$44.69	\$41.11
FAL W511PD D 626 2 ³ / ₄	2 ³ / ₄ Dane Lvr Grd 2,6Pin "C" Kwy	\$44.69	\$41.11
<i>Classroom Lock</i>			
FAL W561PD D 626 2 ³ / ₈	2 ³ / ₈ Dane Lvr Grd 2,6Pin "C" Kwy	\$44.69	\$41.11
FAL W561PD D 626 2 ³ / ₄	2 ³ / ₄ Dane Lvr Grd 2,6Pin "C" Kwy	\$44.69	\$41.11
<i>Storeroom Lock</i>			
FAL W581PD D 626 2 ³ / ₈	2 ³ / ₈ Dane Lvr Grd 2,6Pin "C" Kwy	\$44.69	\$41.11
FAL W581PD D 626 2 ³ / ₄	2 ³ / ₄ Dane Lvr Grd 2,6Pin "C" Kwy	\$44.69	\$41.11



25% Savings!

Gaskets

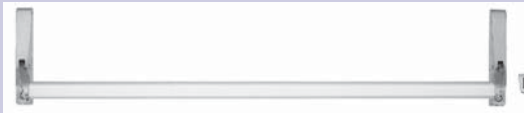


Part No.	Description	Reg.	Super Saver RO.
PEM S88D 17	17' Fire/Smoke Dark Bronze	\$13.67	\$10.25
PEM S88D 20	20' Fire/Smoke Dark Bronze	\$16.08	\$12.06
PEM S88D 204	204' Fire/Smoke Dark Bronze	\$147.60	\$110.70



25% Savings!

Concealed Vertical Rod Exits



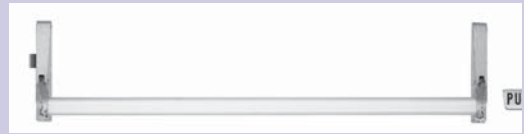
Super Saver Price:

\$117.41

(Regular \$156.55 ea.)

Part No.	Description
JAK 1085 313	48 x 84 Brz
JAK 1085 628	48 x 84 AL

Rim Exits



Super Saver Price:

\$107.75

(Regular \$143.66 ea.)

Part No.	Description
JAK 1095 313 LHR	48" Drk Brz
JAK 1095 313 RHR	48" Drk Brz
JAK 1095 628 LHR	48" AL
JAK 1095 628 RHR	48" AL

 **Wilco Supply**
A Family Owned Business
Serving You Since 1951