

**CABINET LOCKS, NATIONAL & CCL KEYWAYS**

**Door Locks, Square Back**



*General Features:*

- Easily rekeyable via set screw cylinder release mechanism
- Solid brass pin tumbler cylinder
- For 7/8" to 1 3/8" material thicknesses
- 7/8" barrel diameter
- For 3/4" material, add one OLL WP21 spacer to 7/8" lock
- For 1 1/8" material, add two OLL WP21 spacers to 1 3/8" lock
- Keyed alike, keyed different or master keyed. Custom keying available.



- 10 per box
- Available separately:*
- Spacer OLL WP21

*100DR Features:*

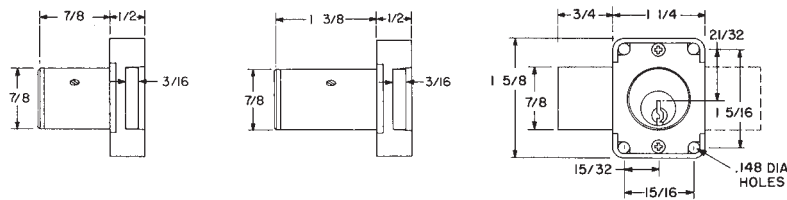
- National D4291 keyway
- 7/8" or 1 3/8" barrel lengths available; specify
- Includes bar strike OLL 56-1
- 4 pin standard, drilled for 5 pin

*500DR Features*

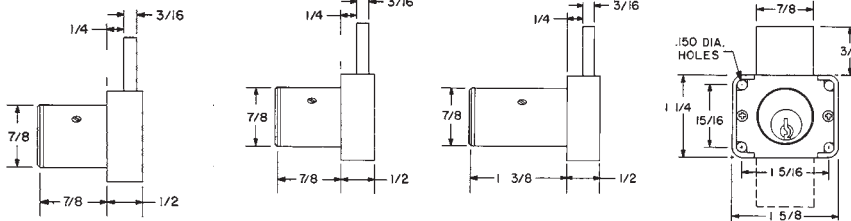
- CCL R1 keyway
- 7/8" or 1 3/8" barrel lengths available; specify.
- Includes bar strike OLL 56-1
- 5 pin standard – 6 pin available

**Part No.**

- OLL 100DR 7/8 606 KD
- OLL 100DR 7/8 606 KA
- OLL 100DR 7/8 626 KD
- OLL 100DR 7/8 626 KA
- OLL 100DR 1 3/8 606 KD F/O
- OLL 100DR 1 3/8 606 KA F/O
- OLL 100DR 1 3/8 626 KD F/O
- OLL 100DR 1 3/8 626 KA F/O
- OLL 500DR 7/8 606 KD
- OLL 500DR 7/8 606 KA
- OLL 500DR 7/8 626 KD
- OLL 500DR 7/8 626 KA
- OLL 500DR 1 3/8 606 KD
- OLL 500DR 1 3/8 606 KA
- OLL 500DR 1 3/8 626 KD
- OLL 500DR 1 3/8 626 KA



**Drawer Locks, Square Back**



*General Features:*

- Easily rekeyable via set screw cylinder release mechanism
- Solid brass pin tumbler cylinder
- 7/8", 1 3/8" or 1 5/8" barrel length available, specify
- 7/8" barrel diameter
- For 3/4" material, add one OLL WP21 spacer to 7/8" lock
- For 1 1/8" material, add two OLL WP21 spacers to 1 3/8" lock
- Keyed alike, keyed different or masterkeyed. Custom keying available.
- 10 per box

*Available Separately:*

- Spacer OLL WP21
- 200DW Features:*
- National D4291 keyway
- 7/8", 1 3/8" or 1 5/8" barrel lengths available; specify
- Includes bar strike OLL 56-1
- 4 pin standard, drilled for 5 pin
- 600DW Features*
- CCL R1 keyway
- 7/8" or 1 3/8" barrel lengths available; specify
- Includes bar strike OLL 56-1
- 5 pin standard – 6 pin available

**Part No.**

- OLL 200DW 7/8 606 KD
- OLL 200DW 7/8 606 KA
- OLL 200DW 7/8 626 KD
- OLL 200DW 7/8 626 KA
- OLL 200DW 1 3/8 606 KD
- OLL 200DW 1 3/8 606 KA
- OLL 200DW 1 3/8 626 KD
- OLL 200DW 1 3/8 626 KA
- OLL 200DW 1 5/8 626 KD
- OLL 200DW 1 5/8 626 KA
- OLL 600DW 7/8 606 KD
- OLL 600DW 7/8 606 KA
- OLL 600DW 7/8 626 KD
- OLL 600DW 7/8 626 KA
- OLL 600DW 1 3/8 606 KD
- OLL 600DW 1 3/8 606 KA
- OLL 600DW 1 3/8 626 KD
- OLL 600DW 1 3/8 626 KA

**CABINET & SLIDING DOOR LOCKS, NATIONAL & CCL KEYWAYS**

**Drawer Locks, Diamond Back**



*General Features:*

- Easily rekeyable via set screw cylinder release mechanism
- Solid brass pin tumbler cylinder
- 7/8" or 1 3/8" (N078 only) barrel length, specify
- 7/8" barrel diameter
- For 3/4" material, add one WP21 spacer to the 7/8" barrel lock
- Re-keyable pin tumbler
- Keyed alike, keyed different or master keyed  
Custom keying available
- 10 per box
- Supplied without strike

*Available Separately:*

- Spacer OLL WP21
- Strikes OLL 07S, OLL 56-1, OLL 12-1

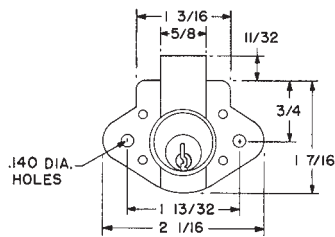
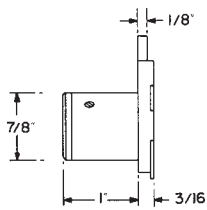
*N078 Features:*

- National D4291 keyway
- 4 pin standard, drilled for 5 pin

*R078 Features*

- CCL R1 keyway
- 5 pin standard

*Note: This lock is not recommended for use on cabinet doors due to its gravity activated cam. It should be used in cabinet drawer applications only.*



**Part No.**

- OLL N078 7/8 606 KD
- OLL N078 7/8 606 KA
- OLL N078 7/8 626 KD
- OLL N078 7/8 626 KA
- OLL N078 1 3/8 626 KD
- OLL N078 1 3/8 626 KA

**Part No.**

- OLL R078 606 KD
- OLL R078 606 KA
- OLL R078 626 KD
- OLL R078 626 KA

**Door Locks, Diamond Back**



Same features and specifications as the N078, only intended for use on cabinet doors. Stocked in both left and right hand but is reversible in the field.

**Part No.**

- OLL N078L 7/8 606 KD
- OLL N078L 7/8 606 KA
- OLL N078L 7/8 626 KD
- OLL N078L 7/8 626 KA
- OLL N078L 1 3/8 606 KD
- OLL N078L 1 3/8 606 KA
- OLL N078L 1 3/8 626 KD
- OLL N078L 1 3/8 626 KA

**Part No.**

- OLL N078R 7/8 606 KD
- OLL N078R 7/8 606 KA
- OLL N078R 7/8 626 KD
- OLL N078R 7/8 626 KA
- OLL N078R 1 3/8 606KD
- OLL N078R 1 3/8 606KA
- OLL N078R 1 3/8 626KD
- OLL N078R 1 3/8 626KA

**Sliding Door Locks**



*General Features:*

- Speed-release mechanism for easy rekeying
- Pin tumbler cylinder drilled for 5 pin
- For 7/8" material thickness
- 1" barrel diameter
- Keyed alike or different or master keyed. Custom keying available
- 10 per box

*Includes:*

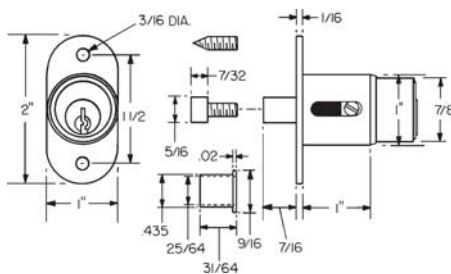
- 10-24 machine thread bolt extender for varying gaps between bypassing doors
- 10-24 machine thread strike locator
- Matching thimble strike

*300SD Features*

- National D4291 keyway
- 4 pin standard, drilled for 5 pin

*40SD Features:*

- CCL R1 keyway
- 5 Pin Standard



**Part No.**

- OLL 300SD 606 KD
- OLL 300SD 606 KA
- OLL 300SD 626 KD
- OLL 300SD 626 KA
- OLL 400SD 606 KD
- OLL 400SD 606 KA
- OLL 400SD 626 KD
- OLL 400SD 626 KA

**CABINET LOCKS, SCHLAGE "C" KEYWAY**

**Door Lock, Schlage "C" Keyway**



*General Features:*

- Easily rekeyable via speed-release/setscrew cylinder removal mechanism
- Will accept other manufacturer's Schlage compatible deadbolt cylinders
- For 7/8" to 1 1/8" or 1 3/8" material thickness (specify size when ordering)
- 1 1/8" barrel diameter
- Schlage "C" Keyway
- Cylinder body chambers Lori replacement plugs
- 5 pin standard, 6 pin available
- 10 per box

*7/8" to 1 1/8" lock includes:*

- Two OLL 10-350 plastic spacers
- One OLL 10-054 1/4" plastic bar strike
- One OLL 10-055 1/2" plastic bar strike

*1 3/8" (F/O) lock includes:*

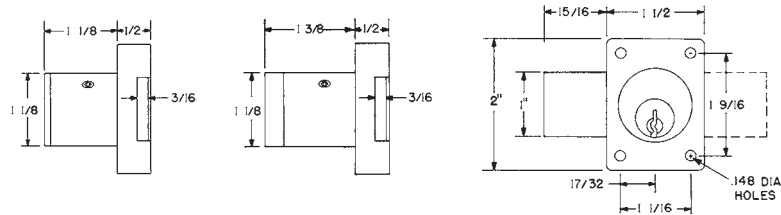
- One OLL 10-054 1/4" plastic bar strike

*Available separately:*

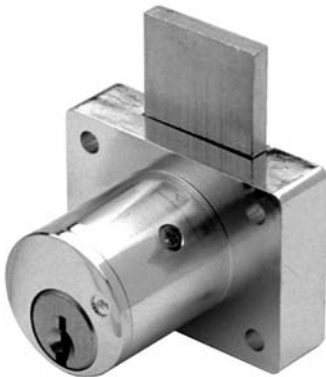
- OLL 10-052 slotted strike (F/O)
- OLL 10-350 plastic spacers
- Alternate 1/2" bolt throw components

**Part No.**

- OLL 700S 7/8 605 KD
- OLL 700S 7/8 605 KA
- OLL 700S7/8 626 KD
- OLL 700S 7/8 626 KA



**Drawer Lock, Schlage "C" Keyway**



*General Features:*

- Easily rekeyable via speed-release/setscrew cylinder removal mechanism.
- Will accept other manufacturer's Schlage compatible deadbolt cylinders
- For 7/8" to 1 1/8" or 1 3/8" material thickness (specify size when ordering)
- 1 1/8" barrel diameter
- Schlage "C" Keyway
- Cylinder body chambers Lori replacement plugs
- 5 pin standard, 6 pin available
- 10 per box

*7/8" to 1 1/8" lock includes:*

- Two OLL 10-350 plastic spacers
- One OLL 10-054 1/4" plastic bar strike
- One OLL 10-055 1/2" plastic bar strike

*1 3/8" F/O lock includes:*

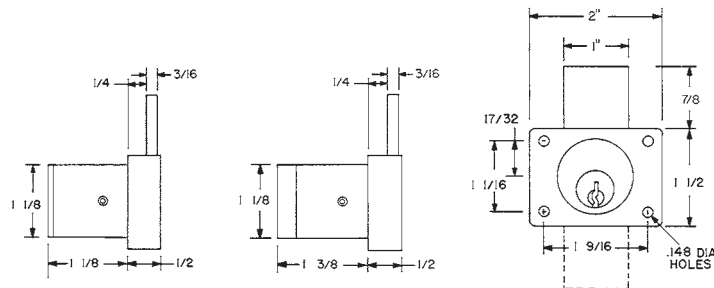
- One OLL 10-054 1/4" plastic bar strike

*Available separately:*

- OLL 10-052 slotted strike F/O
- OLL 10-350 plastic spacers
- Alternate 1/2" bolt throw components

**Part No.**

- OLL 800S 7/8 605 KD
- OLL 800S7/8 605 KA
- OLL 800 S 7/8 626 KD
- OLL 800S 7/8 626 KA



**DRAWER & DOOR LOCKS, DEADLOCKING LATCH**

**Drawer and Cabinet Latch Locks**



*General Features:*

- Field reversible — barrel rotates so that each lock can latch from either side or top or bottom. Stocked in the L78V drawer lock configuration
- Easily rekeyable via patented setscrew cylinder removal mechanism
- Body is die cast zinc, latch is brass with 3/8" projection
- Barrel is either 7/8" or 1 3/8", specify

- Barrel diameter 1 1/8"
- 6 pin Schlage C keyway cylinder
- Satin Chrome (626) or Polished Brass (605) finish

*7/8" lock includes:*

- 2 each 10-351 plastic spacer
- L78-Strike lipped strike

*1 3/8" lock includes:*

- L78-Strike lipped strike

**Part No.**

- OLL L78V 7/8 605 KD
- OLL L78V 7/8 605 KA
- OLL L78V 7/8 626 KD
- OLL L78V 7/8 626 KA
- OLL L78V 1 3/8 605 KD
- OLL L78V 1 3/8 605 KA
- OLL L78V 1 3/8 626 KD
- OLL L78V 1 3/8 626 KA

**Drawer Lock, Deadlocking Latch**



*General Features:*

- Deadlocking latch
- Easily rekeyable via speed-release/setscrew cylinder removal mechanism
- Will accept other manufacturer's Schlage compatible deadbolt cylinders.
- For 7/8" to 1 1/8" or 1 3/8" (F/O) material thickness (specify size when ordering)
- 1 1/8" barrel diameter

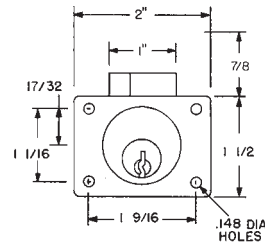
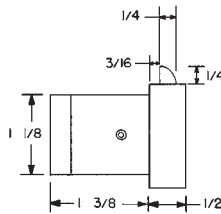
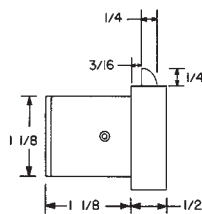
- Schlage "C" Keyway
- Cylinder body chambers Lori replacement plugs
- 10 per box
- 5 pin standard, 6 pin available

*7/8" to 1 1/8" lock includes:*

- Two OLL 10-350 plastic spacers
- Matching strike OLL 850-209

*1 3/8" lock includes:*

- Matching strike OLL 850-209



**Part No.**

- OLL 850 SC 7/8 626 KD

**Large Pin Cam Lock**



*General Features:*

- 1 1/8" diameter body
- 1 5/32" mounting cutout
- 7/8" across flats
- 1 3/8" maximum material thickness
- 5 pin Schlage C cylinder
- Satin Chrome (626) or Polished Brass (605) finish

*Accessories included:*

- 720PL3 stabilizer plate
- 720-3-1 short inverted cam
- 720-3-2 long vertical cam
- 720-CDLM lost motion cam shifter
- 720-CDDM key retaining door cam shifter
- 720-KR key retaining drawer cam shifter

**Part No.**

- OLL 820SC 605 KD
- OLL 820SC 605 KA
- OLL 820SC 626 KD
- OLL 820SC 626 KA

**721DR Series Door Reversible I.C. Door Lock**



*General Features*

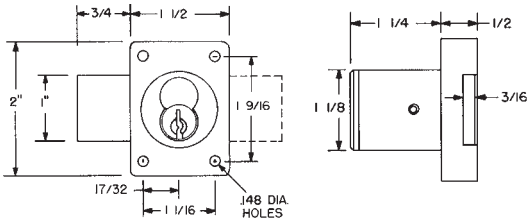
- Door Lock
- Barrel length: 1 1/4"
- Cylinder diameter: 1 1/8"
- Accepts Best, Arrow, Falcon, KSP, Schlage SFIC or equivalent interchangeable cores
- Includes all parts to be easily changed between door and drawer functions
- Packed 10 per box

*Note: All locks sold less core.*

*Includes:*

- 3 #10-350 plastic spacers
- 1 #10-054 1/4" plastic bar strike
- 1 #10-055 1/2" plastic bar strike
- 725-PA plastic actuator to functionally test lock without core
- 721DR-11 door prong driver
- 721DW-11 drawer prong driver

*Also available as a drawer lock on. F/O specify OLL 721DW. Other finishes available on F/O*



**Part No.**  
OLL 721DR 626

**777/888 Series Door & Drawer Lock**

*For Schlage Large Format Interchangeable Cores*



**Drawer Lock Shown**

*General Features*

- Barrel length: 1 7/16"
- Cylinder diameter: 1 1/8"
- Accepts Schlage-style large format IC cores
- Key-retaining function also available
- US26D or US3 finish
- Packed 10 per box

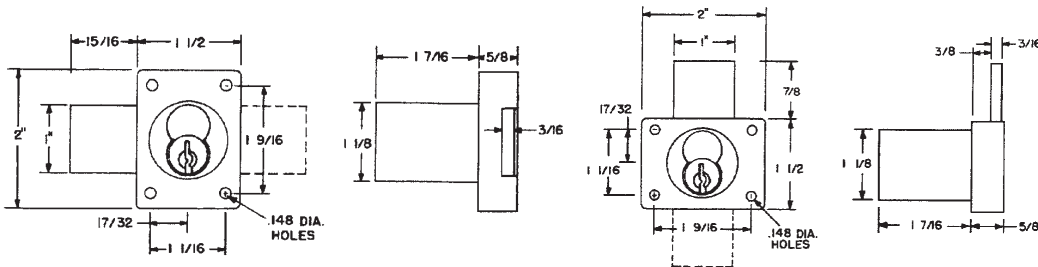
*Includes:*

- 3 #10-350 plastic spacers
- 1 #10-054 1/4" plastic bar strike
- 1 #10-055 1/2" plastic bar strike

*Available Separately:*

- #10-352 slotted strikes

*\*Also available to accept Schlage Primus and Everest Large format IC Cores. Specify 777P or 888P (F/O)*



Part No.	Description
OLL 777IC-DR 605	Door Lock
OLL 777IC-DR 625	Door Lock
OLL 888IC-DW 605	Drawer Lock
OLL 888IC-DW 626	Drawer Lock

**REINFORCING TRIM SPACERS AND TEMPLATES**

**Reinforcing Trim Spacer**



For large pin locks series #700, 721, 777, 800, 850, 888

- External metal 1/4" reinforcing trim spacer allows for an attractive flush mounting of the cabinet lock face
- Through-bolt mount increases security of installation through reinforcement of cabinet face and direct connection of lock mounting screws to external reinforcing trim spacer's binder posts
- Includes mounting screws

**Part No.**  
OLL ETS1 26D

**Template for Reinforcing Trim Spacer**



- Allows for proper mounting hole placement of external trim spacer
- Can be used as a 1/8" shim spacer

**Part No.**  
OLL ETST1 26D

**Spacers**



- Provides 3/32" shim for flush mounting face of lock with face of cabinet
- For use with the following locks:  
OLL 100, 200, 500, 600, N078, R078.

**Part No. Description**  
OLL WP21 -----Small Spacer

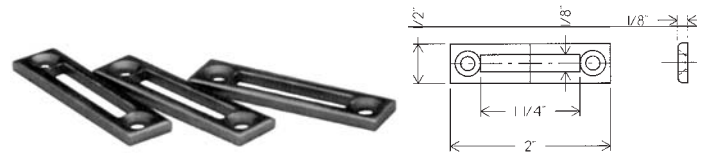


- Provides 1/8" shim for flush mounting face of lock with face of cabinet
- For use with the following locks:  
OLL 700, 721, 725, 800, 850, 950, CR1125.

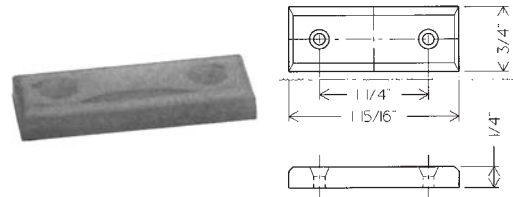
**Part No. Description**  
OLL 10-350-----Large Spacer F/O

**STRIKES**

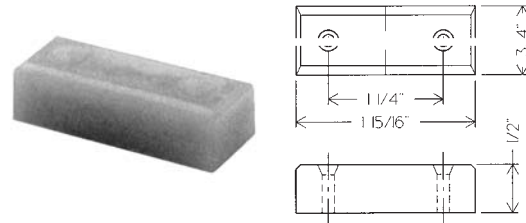
**Strikes for use with OLL 700, 800, 721**



**Part No. Description**  
OLL 10-052 626 ----Slotted Strike, 26D finish

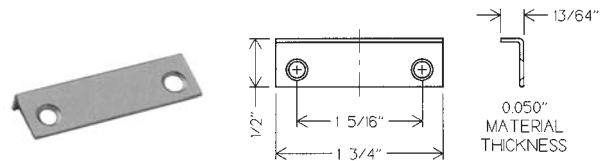


**Part No. Description**  
OLL 10-054 -----1/4" Bar Strike, white plastic

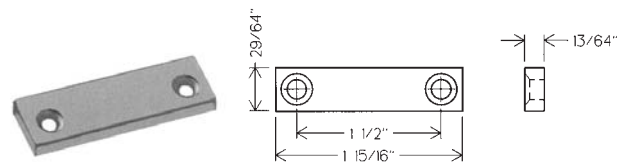


**Part No. Description**  
OLL 10-055 -----1/2" Bar Strike, white plastic

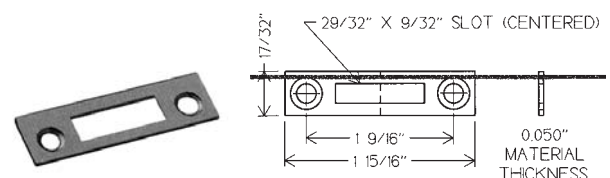
**Strikes for use with OLL 100, 200, 500, 600, N078, R078**



**Part No. Description**  
OLL 12-1 26D -----Angle Strike, Satin Chrome, F/O  
OLL 12-1 4 -----Angle Strike, Satin Brass, F/O



**Part No. Description**  
OLL 56-1 26D -----Bar Strike, Satin Chrome, F/O  
OLL 56-1 4 -----Bar Strike, Satin Brass, F/O



**Part No. Description**  
OLL 075 626 -----Slotted Strike, 26D finish

**PIN KITS & PIN ACCESSORIES**

**National Keyway Pin Kit**



#0 Tumbler OC3750	#1 Tumbler OC3751	#2 Tumbler OC3752	<b>F O L L O W E R</b>	#2 Master Driver OC3740	#3 Master Driver OC3741	#4 Master Driver OC3742
#3 Tumbler OC3753	#4 Tumbler OC3754	#5 Tumbler OC3755		#5 Master Driver OC3743	#6 Master Driver OC3744	#7 Master Driver OC3745
#6 Tumbler OC3758	#7 Tumbler OC3757	#8 Tumbler OC3759		#8 Master Driver OC3746	#9 Master Driver OC3747	#1 Driver OC3730
#9 Tumbler OC3759	Set Screws	Tumbler Spring OC3737		#2 Driver OC3731	#3 Driver OC3732	#4 Driver OC3733

*For Use With*

- OLL N078
- OLL 100DR
- OLL 200DW
- OLL 300SD
- OLL DCN1, 2, 3, 4

- National D4291 Keyway
- .101 brass pins
- Color coded
- 100 pins per package
- Made in USA
- Additional pins available (100 pcs. per pkg.)

**Part No.:** OLL N1

**PIN KITS & PIN ACCESSORIES**



#0 W111 Bottom Pin	#1 W123 Bottom Pin	#2 W135 Bottom Pin	<b>F O L L O W E R</b>	#2 X025 Master Pin	#3 X038 Master Pin	#4 X050 Master Pin
#3 W148 Bottom Pin	#4 W161 Bottom Pin	#5 W173 Bottom Pin		#5 X083 Master Pin	#6 X075 Master Pin	#7 X088 Master Pin
#6 W186 Bottom Pin	#7 W198 Bottom Pin	#8 W210 Bottom Pin		#8 X100 Master Pin	#9 X113 Master Pin	
#9 W223 Bottom Pin	Set Screws	Tumbler Springs #3875-7 Dia. .095		#0 X'56 Driver	#5 X088 Driver	

*For Use With*

- OLL R078
- OLL 400SD
- OLL 500DR
- OLL 600DW
- OLL DCR1, 2, 3, 4

- CCL R1 Keyway
- .095 brass pins
- B4R ball end bottom pins
- Type B4R & 4R master pins
- 100 pins per package
- Made in USA
- Additional pins available (100 pcs. per pkg.)

**Part No.:** OLL R1

**SOLID BRASS PADLOCK**

**Mountain Series**



*Features*

- Pin tumbler
- Solid brass body
- Hardened steel shackle
- Brass internal parts
- Heel & toe locking
- KD & KA
- All weather, indoor/outdoor
- Includes three keys per lock
- Blister Packed

Part No.	Size	Shackle Dia.	Shackle Clearance
OLL BP075 KD	3/4"	1/8"	1/2"
OLL BP075 KA	3/4"	1/8"	1/2"
OLL BP100 KD	1"	5/32"	7/16"
OLL BP100 KA	1"	5/32"	7/16"
OLL BP125 KD	1 1/4"	3/16"	3/4"
OLL BP125 KA	1 1/4"	3/16"	3/4"
OLL BP125 LS KD	1 1/4"	3/16"	2"
OLL BP125 LS KA	1 1/4"	3/16"	2"
OLL BP150 KD	1 1/2"	1/4"	7/8"
OLL BP150 KA	1 1/2"	1/4"	7/8"
OLL BP175 KD	1 3/4"	1/4"	1"
OLL BP175 KA	1 3/4"	1/4"	1"
OLL BP200 KD	2"	5/16"	1 1/8"
OLL BP200 KA	2"	5/16"	1 1/8"

**Keyblank**

Part No.	Fits Item	Packaged
OLL KB225	BP100-1"	50/box
OLL KB235	BP125-1 1/4"	50/box
OLL KB240	BP150/BP175 1 1/2" & 1 3/4"	50/box
OLL KB250	BP200-2"	50/box

**SECURITY LOCK BOX**

**Shurlok**



*Features*

- Up to 10,000 possible combinations
- Durable, all-metal construction (no plastic buttons or dials)
- Blue Case
- Easy to use
- Opens the first time every time
- Hardened steel shackle
- Rust proof, solid brass internal working parts with chrome plated dials
- Changing the combination for the shackle takes only a few seconds with a simple turn of the change button
- Separate combinations open the shackle and the key storage compartment

**Part No.**  
OLL SL100