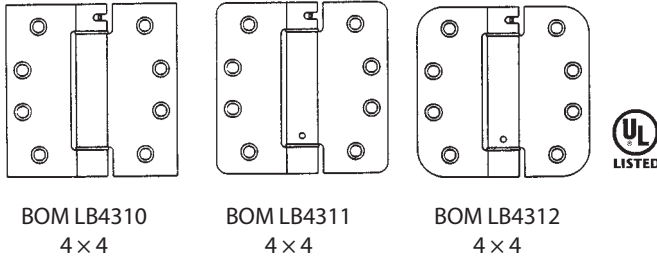


SINGLE ACTING SPRING HINGES

4300 Series



Features

- Single acting
- UL Listed for fire door applications
- Non-handed
- Steel material
- Easily adjusted spring tension
- Template screw hole pattern conforms to ANSI specifications
- Pivot point aligns with hinges of the same size
- Standard packaging is two each per box with screws

Uses

- Minimizes cost of installing a door closing device on industrial, commercial, institutional and residential applications.
- Used to convert doors to self-closing in existing buildings.
- For use in hotels, motels, apartments, dormitories, residences, etc., where doors are required to be self closing.

Maximum Door Size — Labeled Doors

- 3' x 7' x 13/4" Maximum Door Size
- Maximum door size and number of hinges required based on limits set by NFPA standard #80 (two spring hinges minimum).
- These hinges are listed by UL for fire rated openings up to and including 3 hour, A label openings. (Always verify local fire code requirements).

Maximum Door Size — Non-Labeled Doors

- Maximum door width is 4'. For doors over 7'6" in height, use an additional hinge for each additional 30" of height or fraction thereof.

Corners & Hole Pattern

Full Mortise	Corners
LB 4310	Square
LB 4311	1/4" Radius
LB 4312	5/8" Radius

Weight Ratings

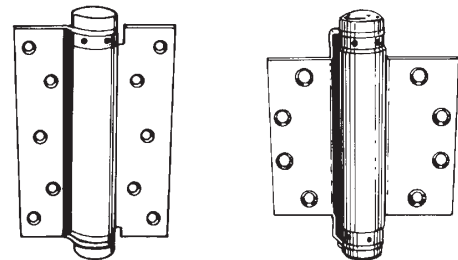
4300 Series	Rec. Maximum Door Wt. (lbs)	Spring Hinges*	Butt Hinges
3.5"	70	2 ea.	1 ea.
	90	3 ea.	—
4"	85	2 ea.	1 ea.
	110	3 ea.	—
4.5"	115	2 ea.	1 ea.
	150	3 ea.	—

* For non-labeled doors over 7'6" in height, use an additional hinge for each additional 30" of height or fraction thereof. Wind conditions, excessive air pressure on one side of opening, or other adverse job conditions may require the use of all spring hinges. For maximum versatility use all spring hinges. Spring Tension may not be required on all hinges. Labeled doors require ball bearing hinges.

Stock Sizes: (Other size and finish combinations are available on F/O)

Part No.	Part No.	Part No.
BOM LB4310 3.5 632	BOM LB4311 3.5 633	BOM LB4312 3.5 633
BOM LB4310 3.5 633	BOM LB4311 3.5 639	BOM LB4312 3.5 639
BOM LB4310 4 600	BOM LB4311 3.5 652	BOM LB4312 3.5 652
BOM LB4310 4 632	BOM LB4311 4 633	BOM LB4312 4.632
BOM LB4310 4 633	BOM LB4311 4 639	BOM LB4312 4 633
BOM LB4310 4 639	BOM LB4311 4 643	BOM LB4312 4 639
BOM LB4310 4 643	BOM LB4311 4 652	BOM LB4312 4 652
BOM LB4310 4 652		
BOM LB4310 C 4.5 600		
BOM LB4310 C 4.5 633		
BOM LB4310 C 4.5 639		
BOM LB4310 C 4.5 643		
BOM LB4310 C 4.5 652		
Stainless Steel:		
BOM LB4390C 4.5 630		

Full Mortise



4010 Non-Template

4020 Template
(Fits standard 4.5" hinge mortise)

Features

- Steel material
- Non-handed
- Pivot points do not align with standard full mortise hinges
- Two each per pack with screws

Maximum Door Sizes & Weights

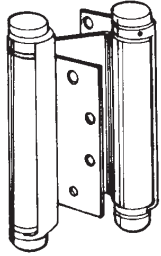
Item No.	2 HINGES		3 HINGES		Door Thick.
	Door Wt.	Door Width	Door Wt.	Door Width	
4010-3	45 lbs	2'-4"	65 lbs	2'-8"	3/4" to 1"
4010-6	125 lbs	3'-0"	155 lbs	4'-0"	13/4"
4020-6	125 lbs	3'-0"	155 lbs	4'-0"	13/4"

To Order:

Part No.	Description
BOM 4010-3 603	Sgl Acting Spr Hinge (Non-Template)
BOM 4010-6 600	
BOM 4010-6 603	
BOM 4020-6 600	Sgl Acting Spr Hinge (Template)

DOUBLE ACTING SPRING HINGES

Mortise



BOM 3029

- Door flange is mortised into door edge
- Jamb flange is surface applied to jamb
- Do not use on doors with hinge edge beveled
- Steel material
- Non-template, non-handed
- Two each per box with machine screws

Features

- Permit doors to open in either direction and automatically return to closed position
- Provide maximum protection for doors subject to normal abuse of lift trucks due to resiliency of spring support and shock absorbing reaction of flexible mounting
- Available in sizes to accommodate a wide range of door sizes
- Adjustable spring tension permits power and speed adjustment of each size spring hinge
- No hanging strip is required on frame

Maximum Door Sizes & Weights

Item No.	2 HINGES		3 HINGES		Door Thickness	Door Height*
	Door Wt.	Width	Door Wt.	Width		
3029-3	35 lbs	2'-0"	38 lbs	2'-8"	3/4"-1"	5'-0"
3029-4	60 lbs	2'-4"	75 lbs	3'-0"	7/8"-1 1/4"	6'-8"
3029-5	65 lbs	2'-8"	93 lbs	3'-0"	1 1/8"-1 1/2"	6'-8"
3029-6	75 lbs	2'-8"	107 lbs	3'-0"	1 1/4"-1 3/4"	7'-0"
3029-8	103 lbs	3'-6"	143 lbs	4'-0"	1 1/2"-2"	7'-0"

* Minimum height for width and weight shown. Hinge capacity decreases as door height decreases. It is advisable to use three hinges on a door. The center hinge should be installed as close as possible to the top hinge for maximum support.

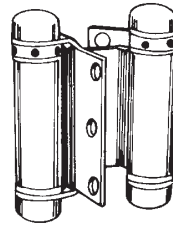
Size is determined by height of door flange

Stock Sizes: (Other size and finish combinations are available on F/O)

Part No.	Part No.	Part No.
BOM 3029 600 3	BOM 3029 633 3	BOM 3029 639 3
BOM 3029 600 4	BOM 3029 633 4	BOM 3029 639 4
BOM 3029 600 5	BOM 3029 633 5	BOM 3029 639 5
BOM 3029 600 6	BOM 3029 633 6	BOM 3029 639 6
BOM 3029 600 8		BOM 3029 639 8
BOM 3029 603 3		
BOM 3029 603 4		
BOM 3029 603 5		
BOM 3029 603 6		
BOM 3029 603 8		

With 4 1/2" template door leaf:
BOM 3029 652 6 x 4 1/2"

Half Surface



BOM 3023

Features

- Door flange is surface applied to face of door
- Jamb flange is surface applied to jamb
- Do not use on doors with hinge edge beveled
- Steel material
- Non-template, non-handed
- All wood screws
- Packed two each per box

Maximum Door Sizes & Weights

Item No.	2 HINGES		3 HINGES		Door Thickness	Door Height*
	Door Wt.	Width	Door Wt.	Width		
3023-3	35 lbs	2'-0"	38 lbs	2'-8"	3/4"-1"	5'-0"

* Minimum height for width and weight shown. Hinge capacity decreases as door height decreases. It is advisable to use three hinges on a door. The center hinge should be installed as close as possible to the top hinge for maximum support.

Part No.	Description
BOM 3023 600 3	Double acting spring hinge, half surface

Series 7000

Features

- Double Acting
- Ball bearing
- NON-ADJUSTABLE SPRING TENSION
- Non-handed
- Plated finishes have malleable iron base; painted finishes have cast aluminum base. *If brass base material is required, use 7300 Series spring pivot (next page).*
- Flat gate brackets are for doors not less than 1" thick
- Flat jamb brackets are 1 1/4" wide
- (10) No. 12 x 1 1/4" flat head wood screws standard

Maximum Gate Sizes & Weights

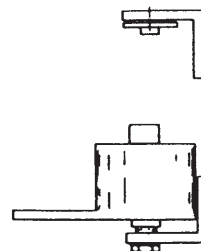
36" in width; 2 1/2" thick; 75 lbs.



- Surface pivot
- Flat gate and jamb brackets
- 3 1/4 lbs. per set



Part No.	Description
BOM 7012-600	Spring Pivot
BOM 7012-603	
BOM 7012-639	



- Mortise pivot
- Flat gate and jamb bracket
- 3 1/4 lbs. per set

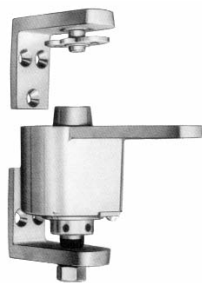
Part No.	Description
BOM 7022-600	Spring Pivot
BOM 7022-603	

DOUBLE ACTING SPRING HINGES

Series 7100

Same as 7000 Series, with the following exception:

- ADJUSTABLE SPRING TENSION

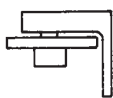


- Surface pivot
- Flat gate and jamb brackets
- 3 1/2 lbs. per set

Part No.	Description
BOM 7112-600	-----Spring Pivot
BOM 7112-603	
BOM 7112-639	

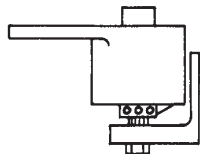
SPRING PIVOTS

Series 7300



Features

- Brass
- Double acting
- Ball bearing
- ADJUSTABLE SPRING TENSION
- Non-handed
- Door brackets:



- Box clamp type, for 1 1/8" thick doors only
- Flat type, for doors not less than 1" thick
- Stile brackets:
- Box clamp type, for 1 1/8" and 1 1/4" thick stiles only
- Flat type, 1 1/4" wide

- Screws — standard:
Box clamp brackets, thru bolts
Flat brackets, No. 12 x 1 1/4" flat head wood screws

Maximum Door Sizes & Weights:

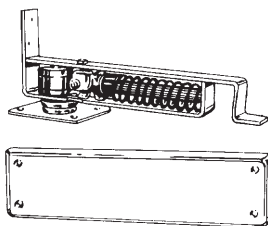
36" in width, 2 1/2" thickness, 75 lbs.

- Surface pivot
- Flat door and stile brackets
- 4 1/2 lbs. per set

Part No.	Description
BOM 7312	-----Spring Gate Pivot (F/O)

Spring Pivot w/ Floor Plate

Horizontal Type

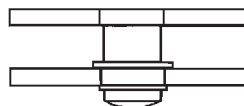


- Malleable iron & steel mechanism
- Steel trim
- Ball bearing
- Double acting
- Hold open at approx. 85°
- Adjustable spring tension
- Alignment screws for centering door
- Non-handed
- One set per box w/ wood screws

- For doors 1 3/8 to 1 3/4" thick; up to 36" wide and 120 lbs.

Part No.	Description
BOM 7811-600	BOM 7811-633
BOM 7811-603	BOM 7811-639
BOM 7811-632	BOM 7811-643

Top Pivot



Part No.	Description
BOM 7890 F/O	-----Top Pivot For 7811

Jamb Bracket, Steel

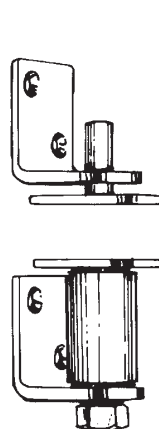


- To mount 7811 to the jamb.
- | Part No. | Description |
|--------------|-------------|
| BOM 7805 603 | |
| BOM 7805 633 | |
| BOM 7805 639 | |

GRAVITY PIVOT

Series 7500

For Dwarf/Lower Doors



Features

- Steel
- Double acting
- Door weight closes door
- Non-handed
- Flat door brackets for doors 7/8" to 1 5/8" thick
- Flat jamb brackets, 1 1/4" wide
- Jamb: (4) 10 x 1" Pan Head Wood Screws
- Door: (4) 10 x 1" Flat Head Wood Screws
- Installation Options: Surface Applied, Mortised in Door
- BOM 7512: Standard Non-Hold Open
- BOM 7512-H: Hold-open at 90° available on F/O

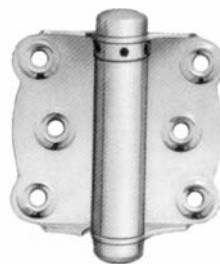
Maximum Door Sizes & Weights

Width — 30"; Weight — 50 lbs.

Part No.	Description
BOM 7512-600	-----Gravity Pivot
BOM 7512-603	
BOM 7512-633	

SCREEN DOOR SPRING HINGES

Full Surface



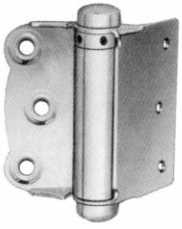
Features

- Steel
- Adjustable tension
- Button tip
- Available with reverse springs
- Measures 3 x 3"
- Packed two per box, with 12 ea. no. 7 x 3/4" screws

Part No.	Description
BOM 2100-600	-----Screen Door Springe Hinge
BOM 2100-601	
BOM 2100-603	
BOM 2100-633	
BOM 2100-639	

SCREEN DOOR SPRING HINGES

Half Surface



Features

- Steel
- Adjustable tension
- Button tip
- Available with reverse springs
- Measures 3"
- Packed two per box, with 12 ea. no. 7 × 3/4" screws

Part No.	Description
BOM 2200-600	Screen Door Spring Hinge
BOM 2200-601	
BOM 2200-603	
BOM 2200-633	
BOM 2200-639	
BOM 2200-RS-603	Reverse Spring Hinge

AUXILIARY SPRINGS

Wrought steel heads. Adjustable spring tension. Economical closing device.



Packed each in poly bag with (4) 8 × 3/4" round head wood screws.
Packed 12 per box.

No.	Length
BOM 2400-601	8 ⁵ / ₁₆ "
BOM 2410-601	9 ⁵ / ₁₆ "



Packed each in poly bag with (4) 12 × 1 1/4" round head wood screws.
Packed 6 per box.

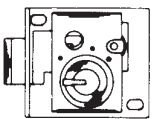
No.	Length
BOM 2430-601	11 ⁵ / ₈ "
BOM 2440-601	12 ³ / ₄ "



Packed each in poly bag with (6) 12 × 1 1/4" round head wood screws.
Packed 6 per box.

No.	Length
BOM 2510-601	13 ⁷ / ₁₆ "
BOM 2520-601	14 ⁵ / ₈ "

MAILBOX LOCKS



Brass mechanism, steel bolt and case, 1 3/4 × 1 1/2".
Three tumblers, 210 key changes. Two keys each,
blank #1289. Packed 10 per box.

Part No.: BOM 25389



Standard cam-type lock. 5-pin tumbler cylinder,
supplied with two keys. Can be supplied in 1000
different key changes.

Part No.: BOM 670-07