

ELECTRONIC CYLINDRICAL DIGITAL LOCKS

Trilogy® T2 Standalone Digital Lock

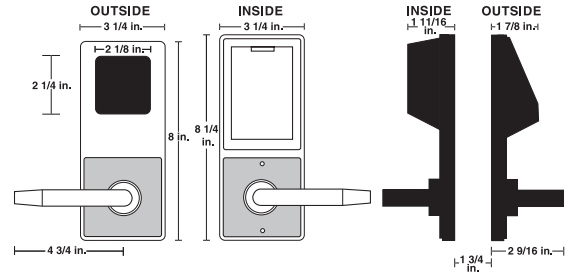
DL2700 Series



Curved Regal Handle Option



- Passage Mode
- Visual and audible entry indicators
- Flex-Drive™ motor operates latch mechanism
- Also available with curved Regal handle: DL2775 version
- Also available in DL2750 Knob version
- “WP” Weatherproof Models - 31°F to +151°F
- Available in five finishes: polished brass (US3), antique brass (US5), polished chrome (US26), satin chrome (US26D), duronodic (US10B)



Lever sets feature clutch mechanism ensuring longer life and complies with ADA specs providing barrier-free access to the disabled.

- Grade 1 Durability — BHMA Grade 1 Lockset with rugged clutch mechanism for exceptional strength and reliability
- All IC Core models include large format key in knob cylinder, supporting Best, Falcon, Arrow and KSP. “Special Order” Interchangeable Core Preps: Yale, Medeco, Sargent, Corbin/Russwin, Schlage
- Multi-level use capability
- Up to 100 different group or individual codes
- Master, manager, emergency, service codes
- Individual, group or total user lockout codes
- Non-handed for easy installation and versatility
- 2-wire remote override or key bypass capability

Cylindrical Trilogys

DL 27 00 WP IC /26D -Y

Model/Series:

- DL27 = DL2700 Series
- DL28 = DL2800 Series
- DL30 = DL3000 Series
- PDL 30 = PDL3000 Series

Trim:

- 00 = Lever
- 50 = Knob (only for DL2700 series)
- 75 = Regal Curved Lever

Exterior/Interior Use:

For Exterior use of DL2700 & DL3000 only, order WP for weatherproof use. All other models are weatherproof as standard.

Cylinder:

IC = Standard Interchangeable Core Prep for Best, Falcon, Arrow, KSP
(Note: No “IC” indicates standard K.O. cylinder.)

Finish:

- /3 = US3 Polished Brass
- /26 = US26 Polished Chrome
- /26D = US26D Satin Chrome
- /5 = US5 Antique Brass
- /10B = Duronodic (Special Order)

Special Order IC Prep:

- Y = Yale
- M = Medeco
- R = Sargent
- C = Corbin/Russwin
- S = Schlage

Part No.

ALC DL2700

ELECTRONIC CYLINDRICAL DIGITAL LOCKS

Trilogy® Standalone Digital Lock

DL2800 Cylindrical Lock



- Rugged clutch mechanism insures long life and durability
- 150 scheduled events
- 200 user codes: master, manager, supervisor and basic users. Also one-time entry code
- 1000 Event Log
- All IC Core models include a large format key in knob cylinder, supporting Best, Falcon, Arrow and KSP “Special Order” Interchangeable Core Preps: Yale, Medeco, Sargent, Corbin/Russwin, Schlage
- Weather resistant with operational temperature range of 151°F to -20°F
- Timed entry allowance from 5–15 seconds
- Greater security with “Temporary Keypad Lockout” after 3 unsuccessful code-entry attempts
- Audit Trail with Time/Date Stamp for a printable record of all electronic activity
- Real Time Clock
- Relay may be programmed to energize when one or more selected events occur
- 4 Time-Out functions
- Battery operated; uses 5 AA batteries
- Available in standard key override and interchangeable core models accepting 6 or 7 pin cores from Arrow, Best, Falcon, or KSP. Other IC core preps available
- Available in five finishes: polished brass (US3), antique brass (US5), polished chrome (US26), satin chrome (US26D), duronodic (US10B)
- Available in standard Trilogy leverset (straight) or with Regal (curved) lever

Part No.
ALC DL2800

Trilogy® T3 Standalone Digital Lock

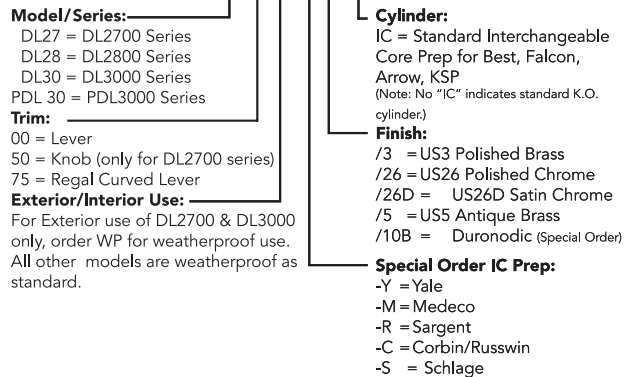
DL3000 Series Advanced Audit Trail Cylindrical Lock

Similar features to DL2700 and DL2800 Series, but with:

- 300 user codes: master, manager, supervisor and basic users
- 1600 Event Log
- 4 programming levels, 4 user groups
- 3,4,5 or 6 digit codes, 1-Time service code
- Real time clock
- Time zones
- 150 scheduled events (Lock/Inlock, Code Disable/enable)
- 4 “Quick Schedules” of the most common routines
- 100% fingertip programmable or PC programmable with Alarm Lock DL-Windows - Windows software
- Non-volatile memory
- Passage mode enabled by Master’s and Manager’s codes
- Optional hand-held AL-IR1 infrared Printer may be used to print the Event Log and User code list
- Available in five finishes: polished brass (US3), antique brass (US5), polished chrome (US26), satin chrome (US26D), duronodic (US10B)
- All IC core models include a large format key in knob cylinder, supporting Best, Falcon, Arrow and KSP. “Special Order” Interchangeable Core Preps: Yale, Medeco, Sargent, Corbin/Russwin, Schlage
- “WP” Weatherproof Models - 31°F to +151°F

Cylindrical Trilogys

DL 27 00 WP IC /26D -Y



Part No.
ALC DL3000

ACCESSORIES FOR ALL TRILOGY AUDIT TRAIL LOCKS

AL-DTM2 data transfer Module



Module used to transfer program data from the PC to the keypad and receive Audit Trail from the keypad. Can send program data for up to 96 keypads.

Part No.
ALC AI-DTM2

Trilogy PC software Kit AL-PCI2



Windows-format software kit used to program Trilogy lock, codes, schedules, view audit trail reports. Kit includes DL-Windows software and serial computer interface cable (required). ALPCI2-U, as above with USB interface cable.

Part No.
ALC AI-PCI2

AL-IR1 Infrared Printer



Prints the event log and user code with hand-held convenience.

Part No.
ALC AL IR1

Prox Card reader/Enroller



For Prox Models, AL-Pre: Prox Card Reader/Enroller Enables instant, automatic enrollment of Prox Cards into DL-Windows (just tap the prox Card/fob device to the unit's faceplate to enroll) Supports all Prox Cards and Prox keyfobs. Simultaneous card enrollment, downloading or polling – all on just one serial port. 9V battery operation.

Part No.
ALC AL-PRE

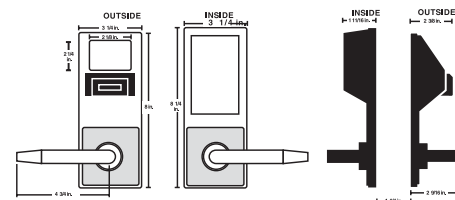
TRILOGY PROX READERS

Trilogy Prox Lock

PDL 3000 series PIN/Prox Cylindrical



- Accepts HID proximity cards and keyfobs including 26, 33 and 37 bit formats etc.
- 2000 user codes, master, manager, supervisor, basic users
- Users are individually programmed to use a card only, code only, or for the highest security – both card and code
- Up to 40,000 event Audit Trail with printed time/date stamped log of all electronic activity can be extracted from the lock by using the AL-IR1 (infrared printer), the AL-DTM2 (data transfer module) or AL-PCI (PC interface)
- Card data can be added to software via the lock, card reader module or PC
- Batch enroll feature allows many cards to be quickly added to the software via the lock without the use of a PC
- Weatherproof and operates from +151°F to -31°F
- Program data transferred to lock via AL-PCI (PC interface or AL-DTM2 (data transfer module)
- Fingertip (keypad) or Windows PC - programmable
- Real time clock enables up to 500 scheduled events and holiday schedules
- 5 AA batteries furnished; 60,000 cycles typical. Audible low battery alert
- “Quick Passage” Mode enabled with an authorized user code and function code (does not require lock to be in program mode)
- Available in five finishes: polished brass (US3), antique brass (US5), polished chrome (US26), satin chrome (US26D), duronodic (US10B)
- All IC Core models include a large format key in knob cylinder, supporting Best, Falcon, Arrow and KSP. “Special Order” Interchangeable Core Preps: Yale, Medeco, Sargent, Corbin/Russwin, Schlage



Part No.: ALC PDL3000

TRILOGY MORTISE ELECTRONIC DIGITAL LOCKS

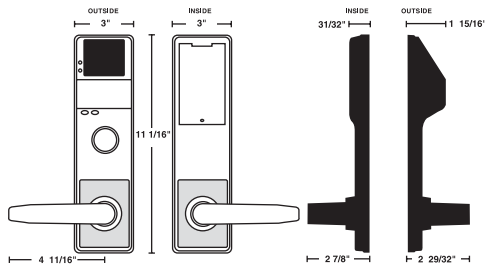
T3 DL3000 in a Mortise Lock



Curved Regal Handle Option

Similar in functionality to T3 DL3000 series, plus:

- 300 user codes: master, manager, supervisor and basic users
- Weatherproof – operates from -20°F to +151°F (-29°C to +66°C)
- Fingertip or Windows PC-programmable
- Real time clock enables up to 500 scheduled events and holiday schedules
- 40,000 Event Audit Tail provides a printed time/date-stamped log of all electronic activity
- Long-life batteries and low-battery alert
- US versions: choose either Classroom or Deadbolt versions and left or right handing (if reverse hand is required, lock is field reversible)
- Available in standard Trilogy US leverset (straight) or with new Regal (curved) handle trim
- Available in five finishes: polished brass (US3), antique brass (US5), polished chrome (US26), satin chrome (US26D), duronodic (US10B)
- 1 1/4" – 1 1/2" (3.5) mortise cylinder supplied



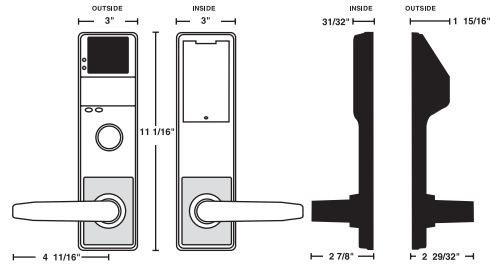
Part No.
ALC DL3500

Trilogy Prox Mortise Lock



Similar in functionality to DL3500 series, plus:

- Accepts most HID Proximity cards and keyfobs
- 2000 user codes: master, manager, supervisor, basic users
- Users are programmed to use card only, code only, or card and code
- Card data can be enrolled into software via the lock, card reader module or PC
- Batch enroll feature allows many cars to be quickly added to the software via the lock
- Program data transferred to lock via AI-PCI or AL-DTM2
- Quick Passage Mode enabled with an authorized user code and function code (does not require lock to be in program mode)



Mortise Trilogys

DL 35 00 DB R /26D EX

Model & Series:

DL35 = Trilogy T3 Mortise Series

Trim:

00 = Standard Lever
75 = Regal Curved Lever (U.S. Option Only)

Lock Body:

DB = Dead Bolt
CR = Class Room (U.S. Only)

Handing:

Your Door - _____ Order - _____
Left Handed _____ L
Right Handed _____ R
Left Hand Reverse Bevel _____ R
Right Hand Reverse Bevel _____ L

Finish:

/3 = US3 Polished Brass
/26 = US26 Polished Chrome
/26D = US26D Satin Chrome
/5 = US5 Antique Brass
/10B = Duronodic

European Model Suffix
Not Used For U.S. Models

*Note: Standard Lever for U.S. Models is Straight Lever. Standard Lever for European Models is Curved Tubular Lever

(Note: Trim is non-handed. Lock body is field reversible.)

Part No.
ALC PDL3500

ACCESS KEYPADS

Weatherproof 12/24V Digital Access Keypad



- Ideal for use with 12V or 24V (AC or DC) electric door strikes or mag locks
- Easiest installation in minutes: Wall mount or single gang box
- Timed Egress Input allows door to open for 5, 10 or 15 seconds
- 2 High-Current Rated 8A Relays for entry, alarm zone shunting or lock release by real-time schedule
- Weatherproof, rugged all metal 12-button keypad
- 2,000 user codes, master, manager, supervisor and basic
- 100% Fingertip or PC Programmable with familiar Trilogy method
- 40,000 Event Audit Trail: Query by PC or Handheld Printer or DTM2 Module
- Real time clock with time-zone adjustments, enables 500 scheduled or holiday events
- Independent Tamper-Report when attempts are made to vandalize or remove DK3000 via an alarm system
- Remote-Release Feature/Request-to-Exit Input

Part No.

ALC DK3000 26D

Digital Access Keypad with Prox Reader



- Same features as DK3000 above, plus built-in proximity reader
- Accepts HID cards and keyfobs as well as digital PIN codes



Part No.

ALC PDK3000 26D

TRILOGY EXIT

Trilogy Exit Trims



OUTSIDE:
Rugged, field-proven
Trilogy Digital Lock

INSIDE:
Existing panic exit device –
Most major brands supported

Add Trilogy convenience, programming, flexibility and audit trail to panic exit devices from most major manufacturers

- Clutch Mechanism insures long life and durability
- Fingertip and/or Windows programmable
- 2000 User Codes: Master, manager, supervisor and users
- Real Time clock for up to 40,000 Event Time/Date-Stamped Audit Trail
- Up to 500 Lock/Unlock Schedules (with Time Zone Support)
- Rugged 12-Button metal keypad
- Non-Handed; Full field reversible
- Adaptable to most major manufacturers of standard RIM and IC RIM cylinders
- Battery operated, uses 5 AA batteries

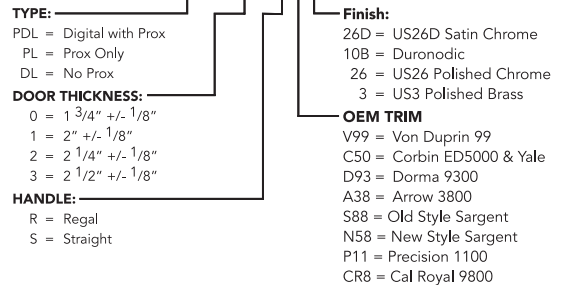
Also available in Prox Model for added convenience and security.

Includes all of the features above plus:

- Accepts most HID Proximity cards and keyfobs
- Users are individually programmed to use a card only, code only, or for highest security – both card and code
- Prox card data can be added to software by uploading from lock, by using AL-PRE or entering directly from computer using DL-Windows software

Mortise Trilogys

ETPDL- O R/ 26D V99



Part No. Description

ALC ETDL -----Trilogy Exit Trim

ALC ETPDL-----Trilogy Prox Exit Trim

TRILOGY 4100 SERIES



Flashing LED outside indicates the room is occupied

Ideal anywhere temporary sessions of privacy are required:

- Single-occupancy restrooms
- Darkrooms
- Executive offices
- Dressing rooms
- “Privacy” feature. With the push of a button on the back of the lock (inner door), the lock cannot be opened from the front entry side
- LED indicator on front of the door will flash while privacy feature is active. Tri-colored LED indicator also shows code acceptance, denial or low battery condition.
- Programmable “Residency” feature allows users to close the door behind them and have the lock remain unlocked until it is physically relocked with PIN or Prox device
- 2000 3 to 6 digit user codes: Master, manager, supervisor, basic users. (PDL-Prox models support up to 2000 Prox. ID cards/fobs or codes) One-time service codes. Total user lockout code. Keypad lockout after numerous attempts to “guess” codes.
- Field-proven, standalone rugged keyless locks with vandal-proof, all-metal keypad
- Weatherproof for use inside and out even in weather extremes from 31° below to 151°F on both sides of the door
- Fingertip (keypad) or Windows PC-programmable
- Scheduled Events; Real time clock enables up to 500 scheduled events and holiday schedules. Program to lock/unlock; disable/enable users; 4 built-in time schedules
- 40,000 Event Audit Trail with Time/Date stamped log
- Iconic bilingual Privacy and Residency instructional signs supplied with lock (English and Spanish; shown above)
- Hospital on-call/sleeping rooms
- Confidential filerooms

Part No.
ALC DL4100

TRILOGY DL1200 AND DL1300 SERIES

Narrow Stile Access Lock

Aluminum Door Retrofit Outside Trim



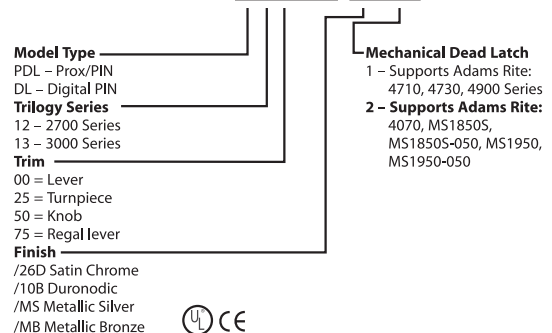
- Aluminum door retrofit outside trim for Adams Rite 1850, 1950, 4710, 4730, 4900 Series and MS1850S and MS1950S Series latch locks
- All-metal, vandal-resistant 12-button keypad supports 3-6 digit PIN codes, and multilevel user hierarchy (master, manager, supervisor, basic users)
- Keypad or PC programmable (see model info.). Quickly and easily add or delete users and enter “passage mode”, service codes, group lock-out and group-enable
- HID Prox ID cards, keyfobs and prox tags supported in PDL-1300 Series models featuring built in Prox reader (High security applications can require use of both PIN code plus Prox ID for access.)
- Real time clock and PC programmable automatic lock/unlock scheduling for 500 events (1300 series models)

- Wide weatherproof operating range from -31 to 151°F (-35 to 66C)
- Wireless standalone locks: Long-life, battery-operated, includes audible and visual low battery alert
- Non-handed; fully field-reversible
- Mortise Cylinder, 1 1/4" supplied. (Supports 1 1/8", 1 1/4" and 1 3/8")
- Compact styling: 14 3/8"H x 1 5/8"D x 1 3/4"W
- Backsets: 3 1/32", 1 1/8" and 1 1/2"; Stile thickness: 1 3/4"
- Four attractive standard finishes: US26D, US10B, MS, and MB

Narrow Stile Trilogy® Lock Models:

- DL1200 Series supports 100 users, fingertip/keypad programmable
- DL1300 Series supports 2000 users and include 40,000 event audit trail and 500 event schedule. Keypad or PC programmable.
- PDL1300 Series supports 2000 PIN or Prox users and includes 40,000 event audit trail and 500 event schedule. Keypad or PC programmable.

ORDERING: DL1200 / 26D1



Part No.
ALC DL1200
ALC DL1300
ALC PDL1300

SIRENLOCK™ PANIC EXIT DEADBOLT HARDWARE

Sirenlock™ Models 250, 700 and 710 are UL Listed panic alarm deadbolt devices which restrict unauthorized use of exit doors by sounding an alarm, while providing instant egress in emergencies.

Sirenlock™ Model 250 and 710

Clapper Plate and Full Door Exit Style Alarms



ALC 250



ALC 700 and ALC 710



- Deadbolt and deadlatch meet relating requirements
- Blaring 95db dual tone siren
- Selectable 2-minute alarm or constant alarm
- 9V battery powered and audible low battery warning
- Meets or exceeds UL, CRM, ADA, NYC housing requirements
- 250/700 Models have changeable 2 minute alarm cutoff or manual reset
- 710 Models have changeable 2 minute auto reset or manual reset
- Models 700 and 710 are available in 33" and 48" versions
- Non-handed surface installations on single or double doors

Part No.
ALC 250 28
ALC 700 28
ALC 710 28

Sirenlock™ Model 715

Delayed Egress Exit Alarm



- Offers stylish, cost-effective control of unauthorized use of exit doors
- 15 second delayed egress with instant 95db Dual Piezo alarm (meets UL specifications)
- Instant alarmed exit in case of actual emergency or fire (meets NFPA 1012 Life Safety Code)
- Easy-to-install, surface mount unit in a standard panic bar deadbolt/deadlatch design
- Monitoring output for simultaneous use of CCTV camera, secondary siren, remote monitoring console, etc.
- Smoke detector input can be used to power existing system or standalone smoke detector(s) (Includes armored door cord and cables for wiring)
- 9V battery back-up powers in event of power failure

Part No.
ALC 715

Model 11A Exit Lock

Deadbolt only; Not for ADA applications



Model 11A is an exit lock designed to control unauthorized use of emergency doors. It provides trouble free service and deters theft from within and outside. Unauthorized use sounds alarm which can only be reset or bypassed with key. Standard features include 1 inch throw deadbolt, warning alarm, outside cylinder capability, tamper switch and long life battery pack. Available for use with double doors or for use with existing panic bars. Optional AC power supply. Requires standard RIM cylinder (not included).

Part No.
ALC 11A

SIRENLOCK™ PANIC EXIT DEADBOLT HARDWARE

SirenLock™, Key Activated



- Powerful Surface Mount, Narrow Stile Exit Door Alarms
- Convenient Plug-In “No Cut” Jumpers
- Improved 95dB “Sweeping” Siren
- Visual Magnetic Alignment Mode eliminates the need for templates
- Requires standard mortise cylinder (not included)

Max-Flex Terminals:

- Continuous Power with the Addition of an External Power Supply
- Multiple Door Monitoring Permitted with built-in External Reed Switches
- Form C Relay Output permits Remote Monitoring

Specifications

Dimensions: 9"L x 2 1/2"W x 2 2/3"D

Finish: Metallic Silver (suffix “MS” to part number) or Metallic Bronze (“MB”)

Power Req.'s: 9 volt alkaline battery, included. May also be used with optional ALC PP100 Battery Eliminator continuous power supply (6–12V).

Sounding Device: Piezo electronic sounder — 95db at 10 feet

Part No.	Description
ALC PG21 -----	Without Max-Flex terminals
ALC PG21E ----	With Max-Flex terminals

SirenLock™, Keypad Controlled



Keypad-programmable, keypad controlled, multi-function door alarm. Contemporary and streamline, the narrow stile PG30 is ideal for every application, including those in which auto-arming is desired. Plus the advanced PG30 provides any or all of the following functions in one door alarm model with “Max-Flex” Terminals: Continuous power (with the addition of a power supply), multiple door monitoring with built-in external reed switches and remote monitoring from its Form C Relay output. The PG30 has three code levels to choose from —

Master, for high security requirements, Management, for unattended applications, and the most flexible level, Passage, ideal for delivery doors, etc. The conveniently keyless PG30 also offers the advantage of an external keypad control with the optional PG30 KPD flush mount keypad, which enables all control functions to be activated from the door's opposite side. Equipped with your choice of three 95db siren alarms.

Specifications are the same as above PG21.

Part No.: ALC PG30

Pilfergard Model Exit Door Alarm



The Pilfergard Model PG10 is an exit door alarm designed to deter the use of the secured door by sounding a twin action alarm when opened by unauthorized personnel. However, the alarm can be bypassed from inside or outside by approved key carrying employees. This unit is easily surface mounted, durable and contains two separate types of tamper proof switches. Test button verifies battery. Optional AC power supply available. Requires standard mortise cylinder (not included).

Part No.
ALC PG10

REMOTE RELEASE ELECTRIC LOCK

Electric Door Lock



Includes keepers

Model 103 is a compact electric lock simple to install on all types of doors. The door is locked or unlocked by remote switch, key switch, time programmer or other electrical contact which interrupts the power. Model 103 is our standard “fail -safe” unit which projects the bolt only while power is “on”. When the power is “off” the bolt retracts.

Part No.
ALC 103

ADD-ONS AND EXTRAS

Outside Access Door Pull



For access from building exteriors. Installed on the outside of the door and linked to the lock. After deadbolt is retracted by outside key, a slight pull will release the deadlatch and open the door 8 x 1 1/2". (For use with all models except Model 11A) Plated cast aluminum. Cylinder not included.

Part No.
ALC 707

Double Door Holder



Secures the inactive door to the door frame. When activated both doors will release. 8 1/2"L x 3"W x 2 1/2"H.

Part No.
ALC 44

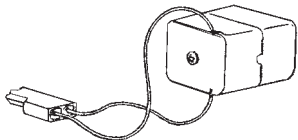
Door Warning Sign



For all models

Part No.
ALC P1027

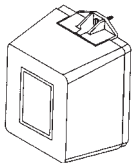
Battery Pack



For PG10

Part No.
ALC BP6

Transformer



24 volt DC, 500 plug-in rectified.

Part No.
ALC 241

Battery Eliminator



For use with all PG10, PG21/E, PG30, 250, 700, 80, 260, 710 and 715 models.

Conserves the battery which automatically takes over as the power source to sound the alarm in the event of a power failure or intentional cut-off. Includes cam lock cylinder, 6' armored cable adequate to provide a door loop at the hinged-side of the door. Can be used with all 6V and 9V models.

Part No.
ALC PP100

Ordering Chart

MODEL/ FEATURE	DL2700	DL2800	DL3000	DL4100	PDL3000	DL3500	PDL3500	DL1200	DL1300	PDL1300
Lock Type	Cylindrical	Cylindrical	Cylindrical	Cylindrical	Cylindrical Prox	Mortise	Mortise Prox	Narrow Stile	Narrow Stile	Narrow Stile
User Codes	17	200	300	2000	2000	300	2000	100	2000	2000
Code Length	3-5 digits	3-6 digits	3-6 digits	3-6 digits	3-6 digits	3-6 digits	3-6 digits	3-6 digits	3-6 digits	3-6 digits
Program- ming	Keypad only	Keypad /PC	Keypad /PC	Keypad /PC	Keypad /PC	Keypad /PC	Keypad /PC	Keypad only	Keypad /PC	Keypad /PC
Vandal-Proof Keypad	All metal, 12 button	All metal, 12 button	All metal, 12 button	All metal, 12 button	All metal, 12 button	All metal, 12 button	All metal, 12 button	All metal, 12 button	All metal, 12 button	All metal, 12 button
Trim w/Rug- ged Clutch	Straight or curved lever	Straight or curved lever	Straight or curved lever	Straight or curved lever	Straight or curved lever	Straight or curved lever	Straight or curved lever	Straight or curved lever	Straight or curved lever	Straight or curved lever
Audit Trail Events		1000	1600	40000	40000	40000	40000		40000	40000
Scheduled events		150	150	500	500	500	500		500	500
Proximity Reader					Prox		Prox			Prox
Privacy Residency				Privacy Residency						
Classroom/ Deadbolt						CR or DB	CR or DB			
Weather- proof -31 to 151 F	WP version	Standard	WP version	Standard	Standard	Standard	Standard	Standard	Standard	Standard
Handing	Nonhanded	Nonhanded	Nonhanded	Nonhanded	Nonhanded	Handed; Field Reversible	Handed; Field Reversible	Nonhanded	Nonhanded	Nonhanded
Door Thickness	1-5/8 to 1- 7/8" (others on request.)	1-5/8 to 1- 7/8" (others on request.)	1-5/8 to 1- 7/8" (others on request.)	1-5/8 to 1- 7/8" (others on request.)	1-5/8 to 1- 7/8" (others on request.)	1-5/8 to 1-7/8"	1-5/8 to 1-7/8"	1-3/4"	1-3/4"	1-3/4"
Backset	2-3/4" (included); 2-3/8" option.	2-3/4" (in- cluded); 2-3/8" option.	2-3/4" (in- cluded); 2-3/8" option.	2-3/4" (in- cluded); 2-3/8" option.	2-3/4" (in- cluded); 2-3/8" option.	2-3/4" (included)	2-3/4" (included)	31/32" 1-1/8" 1-1/2"	31/32" 1-1/8" 1-1/2"	31/32" 1-1/8" 1-1/2"
Cylinder	Large key-in- knob, incld -or- IC Prep for Best/Fal- con/Arrow (w/o cyld.)	Large key-in- knob, incld -or- IC Prep for Best/Fal- con/Arrow (w/o cyld.)	Large key-in- knob, incld -or- IC Prep for Best/Fal- con/Arrow (w/o cyld.)	Large key-in- knob, incld -or- IC Prep for Best/Fal- con/Arrow (w/o cyld.)	Large key-in- knob, incld -or- IC Prep for Best/Fal- con/Arrow (w/o cyld.)	Generic mortise cylinder, supplied.	Generic mortise cylinder, supplied.	Generic mortise cylinder, supplied.	Generic mortise cylinder, supplied.	Generic mortise cylinder, supplied.
Special Order Cylinders	Yale, Medeco, Sargenct, Corbin/Russ- win, Schlage	Yale, Medeco, Sargenct, Corbin/Russ- win, Schlage	Yale, Medeco, Sargenct, Corbin/Russ- win, Schlage	Yale, Medeco, Sargenct, Corbin/Russ- win, Schlage	Yale, Medeco, Sargenct, Corbin/Russ- win, Schlage	Yale, Medeco, Sargenct, Corbin/Russ- win, Schlage	Yale, Medeco, Sargenct, Corbin/Russ- win, Schlage			
Relay options	yes	n/a	yes	yes	yes	yes	yes			
Battery/ Cycles Typ.	5AA; 100000	5AA; 100000	5AA; 100000	5AA; 100000	5AA; 60000	5AA; 100000	5AA; 60000			
Ratings	BHMA Grade 1 Lockset; 3hr. Fire Rated Latch	BHMA Grade 1 Lockset; 3hr. Fire Rated Lockset	BHMA Grade 1 Lockset; 3hr. Fire Rated Lockset	BHMA Grade 1 Lockset; 3hr. Fire Rated Lockset	BHMA Grade 1 Lockset; 3hr. Fire Rated Lockset	BHMA Grade 1 Lockset; 3 Hr Fire	BHMA Grade 1 Lockset; 3 Hr Fire			
Architectural Finishes	US26, US26D, US3, US5 &10B	US26, US26D, US3, US5 &10B	US26, US26D, US3, US5 &10B	US26, US26D, US3, US5 &10B	US26, US26D, US3, US5 &10B	US26, US26D, US3, US5 &10B	US26, US26D, US3, US5 &10B	US26 US10B MB-Met Brz MS-Met Slvr	US26 US10B MB-Met Brz MS-Met Slvr	US26 US10B MB-Met Brz MS-Met Slvr

Ordering Chart

MODEL/ FEATURE	ETDL	ETPDL	DK3000	PDK3000
Lock Type	For use w/panic device	For use w/panic device	Standalone Keypad	Standalone Keypad
User Codes	2000	2000	2000	2000
Code Length	3-6 digits	3-6 digits	3-6 digits	3-6 digits
Program- ming	Keypad /PC	Keypad /PC	Keypad /PC	Keypad /PC
Vandal-Proof Keypad	All metal, 12 button	All metal, 12 button	All metal, 12 button	All metal, 12 button
Trim w/Rug- ged Clutch	Straight or curved lever	Straight or curved lever		
Audit Trail Events	40000	40000	40000	40000
Scheduled events	500	500	500	500
Proximity Reader		Prox		Prox
Privacy Residency				
Classroom/ Deadbolt				
Weather- proof -31 to 151 F	Standard	Standard	Standard	Standard
Handing	Nonhanded.	Nonhanded.		
Door Thickness	1-5/8 to 1-7/8" (others on request.)	1-5/8 to 1-7/8" (others on request.)		
Backset				
Cylinder	Generic Rim Cylinder, supplied. Other mfrs. Cylinder Adapters must be ordered separately.	Generic Rim Cylinder, supplied. Other mfrs. Cylinder Adapters must be ordered separately.		
Special Order Cylinders				
Relay options	yes	yes	yes	yes
Battery/ Cycles Typ.	5AA; 60000	5AA; 60000	n/a	n/a
Ratings	BHMA Grade 1 Lockset	BHMA Grade 1 Lockset	UL	UL
Architectural Finishes	US26, US26D, US3, US5 & 10B	US26, US26D, US3, US5 & 10B	US26, US26D, US3, US5, 10B, Metallic Silver or Bronze	US26, US26D, US3, US5, 10B, Metallic Silver or Bronze